

Introducing

RECOMPACT® | 2.0

SWISS MADE

The new standard in quality and efficiency.
Redefining Mastery.



**HIGH QUALITY YARN
COST EFFICIENT
SWISS QUALITY**

RECOMPACT®

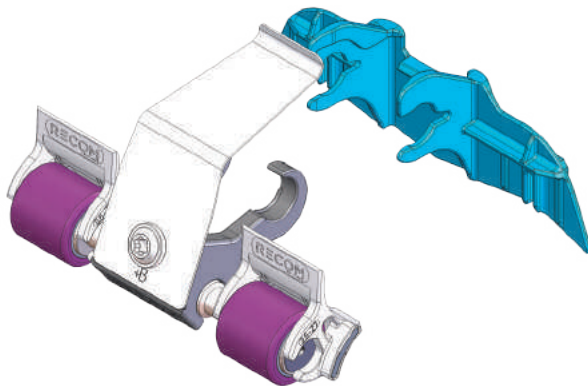
Mechanical compacting solution for ring frames with
P3-1 Toparm

RECOMPACT® | 2.0

SWISS MADE

BASIC PACKAGE

Recompact 2.0 provides optimization of production and compacting without the need of additional power.



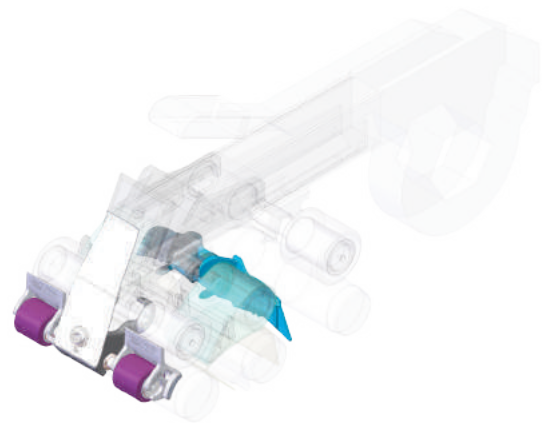
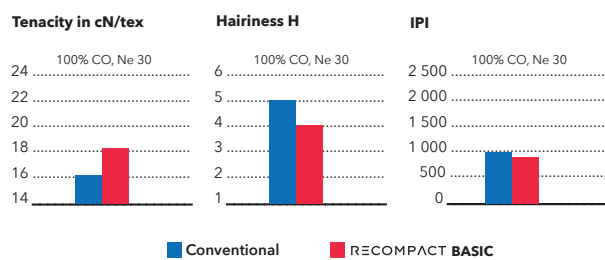
Components

- Compactor
- Top Roller Holder
- Delivery Top Roller
- Roving Guide

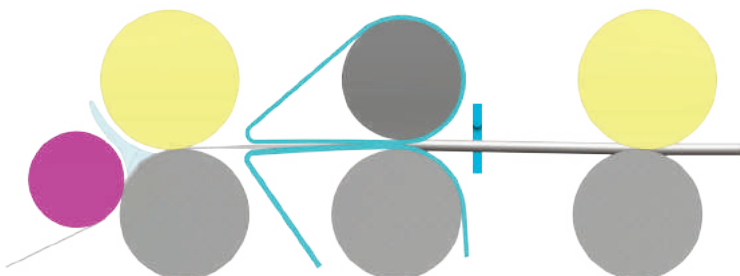
Advantages

- Easy to install
- No additional energy required
- For any type of ring spinning machine
- Higher yarn quality
- Reducing TPI
- Increases production volume
- Processes all standard materials
- Perfect for man made fibres
- Very fast plug on and plug off

Yarn Characteristics



How does the principle work?



Different Compactor Types

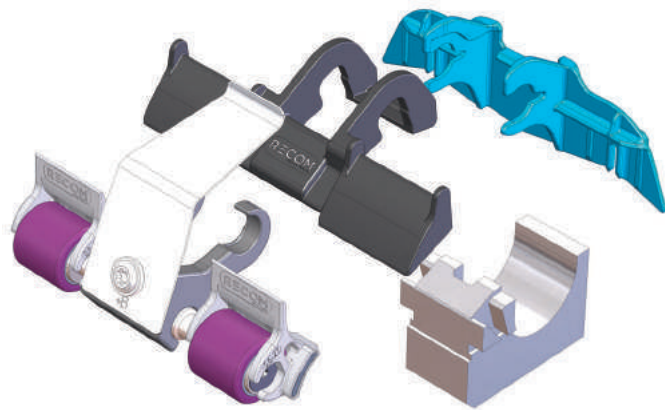
Single channel from Ne 8 to 80
Dual channel Siro Ne 20/2 to 80/2



RECOMPACT® | 2.0

SWISS MADE

PLUS PACKAGE



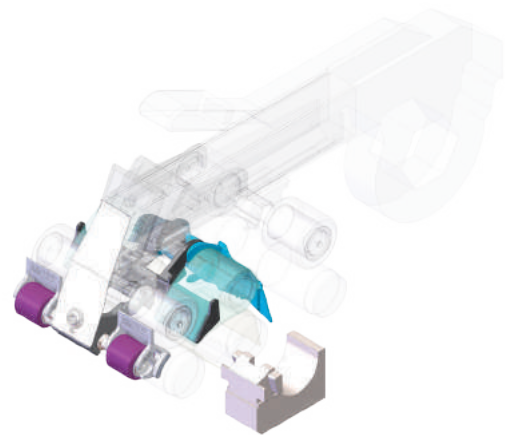
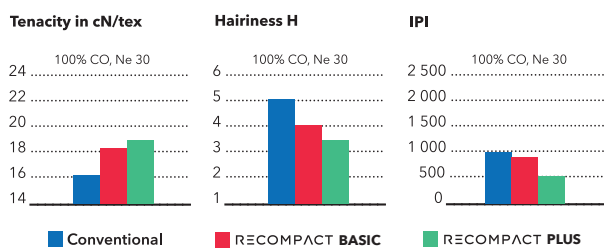
Components

- Compactor
- Top Roller Holder
- Delivery Top Roller
- Roving Guide
- Bearing Slide
- Cradle

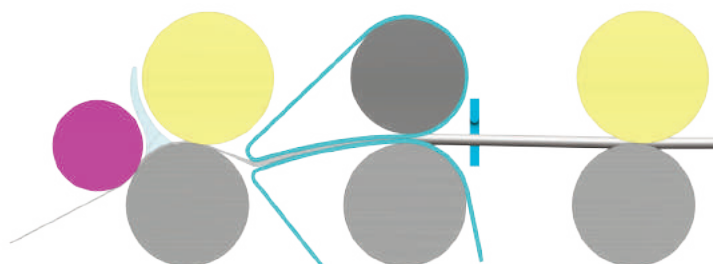
Advantages

- Optimized geometry for mechanical compact
- No additional energy required
- For any type of ring spinning machine
- Best achievable yarn quality
- Reducing TPI by 10%
- Increases production volume
- Processes all standard materials
- No speed limitation

Yarn Characteristics



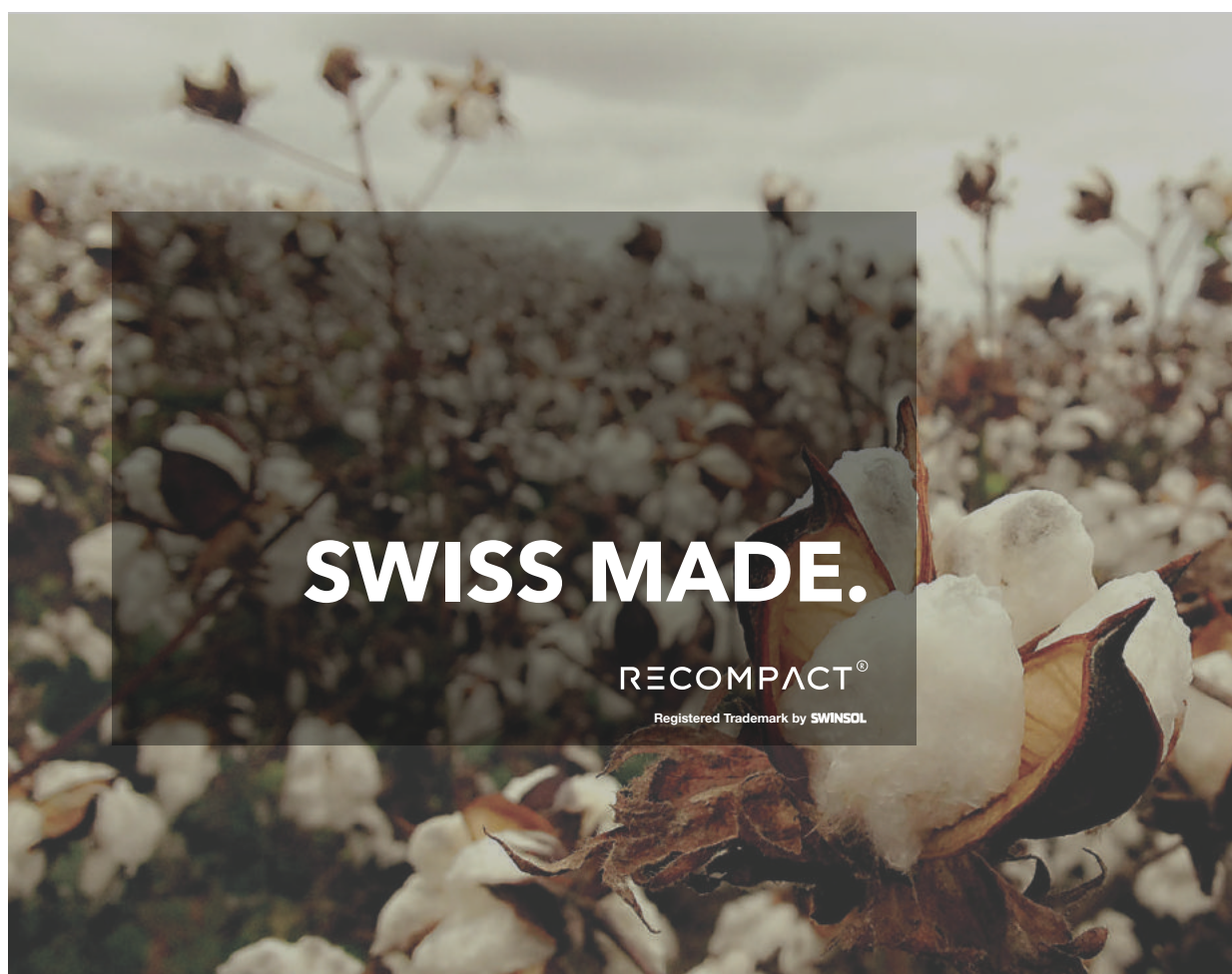
How does the principle work?



Additional setting by Recomcompact 2.0 Plus solution

- Replace the original bearing slide
- Change the top arm settings for negative offset

Recompact 2.0 enables spinners to produce optimum quality yarn aligned with market demands and trends.



Swinsol will not only inspire your organization but will give you concrete and practical guidance needed to build innovation into the fabric of your business.

Swinsol AG
Bahnhofstrasse 6-8
CH-9434 Au
Switzerland

T +41 71 510 92 51
F +41 71 510 92 59
www.swinsol.com
info@swinsol.com

Introducing

RECOMPACT[®] | 2.0

SWISS MADE

The new standard in quality and efficiency.
Redefining Mastery.



**HIGH QUALITY YARN
COST EFFICIENT
SWISS QUALITY**

RECOMPACT[®]

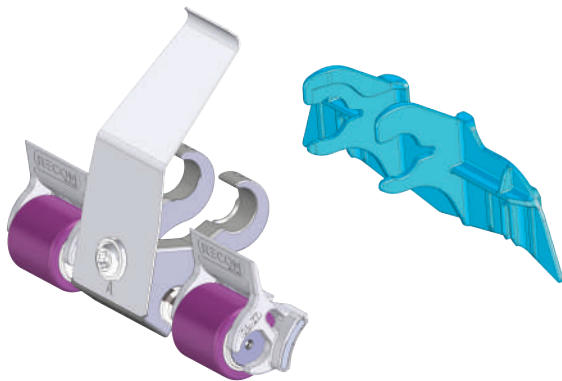
Mechanical compacting solution for ring frames with
PK2025 Toparm

RECOMPACT® | 2.0

SWISS MADE

BASIC PACKAGE

Recompact 2.0 provides optimization of production and compacting without the need of additional power.



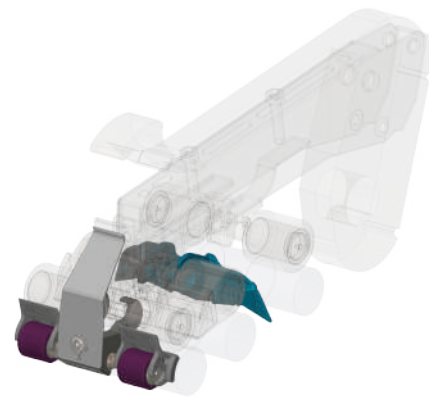
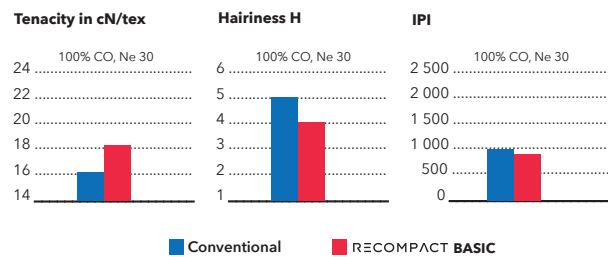
Components

- Compactor
- Top Roller Holder
- Delivery Top Roller
- Roving Guide

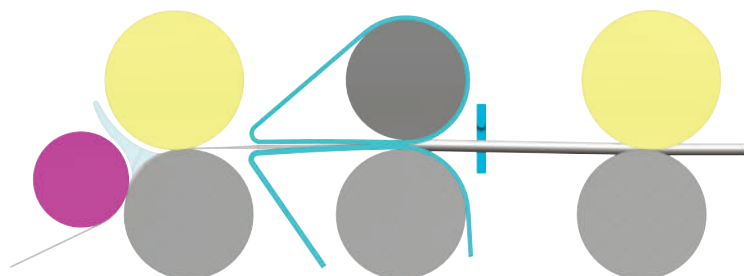
Advantages

- Easy to install
- No additional energy required
- For any type of ring spinning machine
- Higher yarn quality
- Reducing TPI
- Increases production volume
- Processes all standard materials
- Perfect for man made fibres
- Very fast plug on and plug off

Yarn Characteristics



How does the principle work?



Different Compactor Types

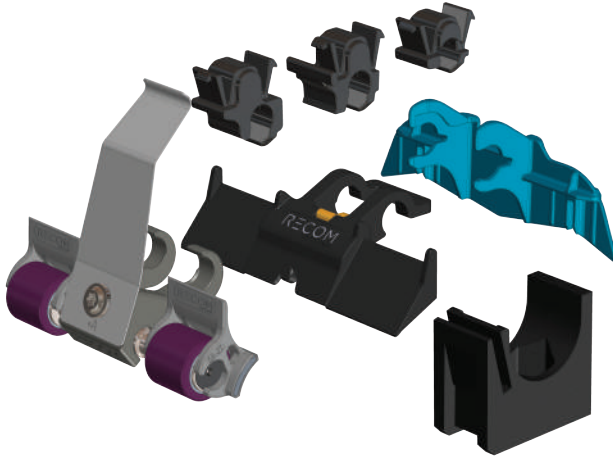
Single channel from Ne 8 to 80
Dual channel Siro Ne 20/2 to 80/2



RECOMPACT® | 2.0

SWISS MADE

PLUS PACKAGE



Components

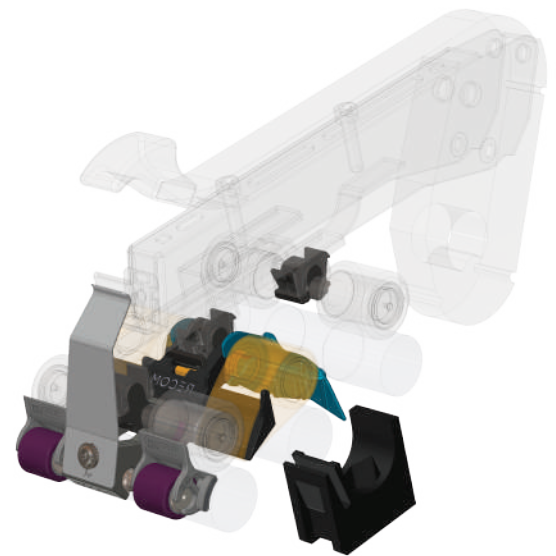
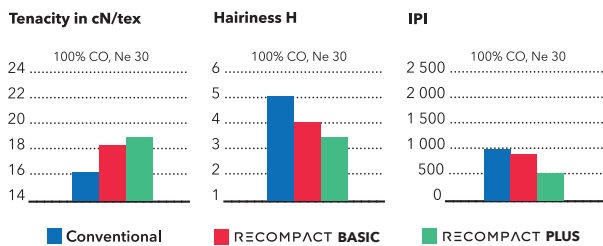
- Compactor
- Top Roller Holder
- Delivery Top Roller
- Roving Guide
- Bearing Slide
- Cradle
- Saddle Inserts

Advantages

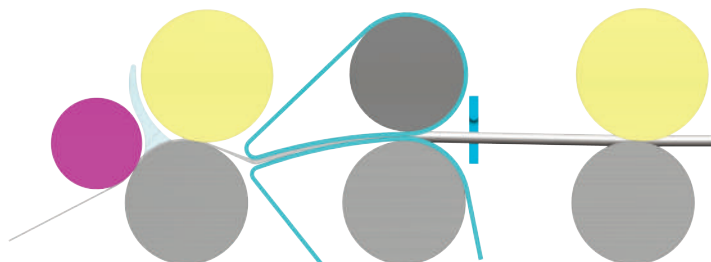
- Optimized geometry for mechanical compact
- No additional energy required
- For any type of ring spinning machine
- Best achievable yarn quality
- Reducing TPI by 10%

- Increases production volume
- Processes all standard materials
- No speed limitation

Yarn Characteristics



How does the principle work?



Additional setting by Recomcompact 2.0 Plus solution

- Replace the original bearing slide
- Change the top arm settings for negative offset

Recompact 2.0 enables spinners to produce optimum quality yarn aligned with market demands and trends.



Swinsol will not only inspire your organization but will give you concrete and practical guidance needed to build innovation into the fabric of your business.

Swinsol AG
Bahnhofstrasse 6-8
CH-9434 Au
Switzerland


T +41 71 510 92 51
F +41 71 510 92 59
www.swinsol.com
info@swinsol.com

Introducing

RECOMPACT[®] | 2.0

SWISS MADE

The new standard in quality and efficiency.
Redefining Mastery.



**HIGH QUALITY YARN
COST EFFICIENT
SWISS QUALITY**

RECOMPACT[®]

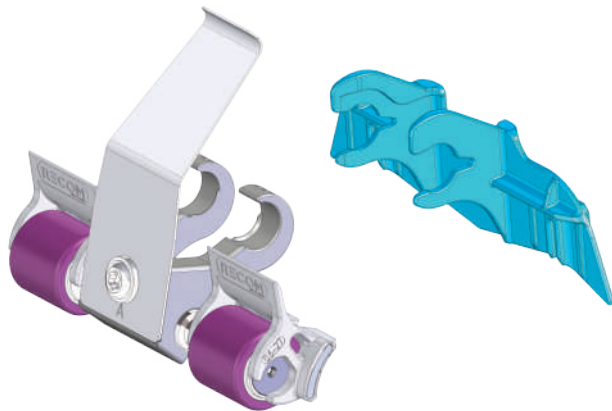
Mechanical compacting solution for ring frames with
PK2630 Toparm

RECOMPACT® | 2.0

SWISS MADE

BASIC PACKAGE

Recompact 2.0 provides optimization of production and compacting without the need of additional power.



Components

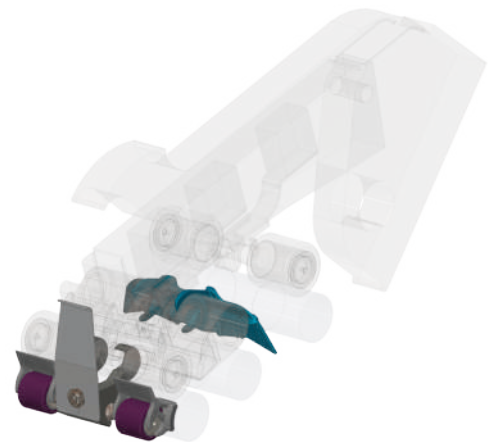
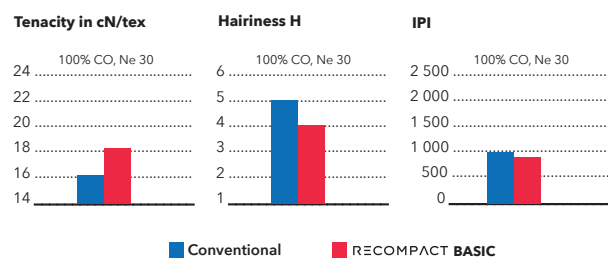
- Compactor
- Top Roller Holder
- Delivery Top Roller
- Roving Guide

Advantages

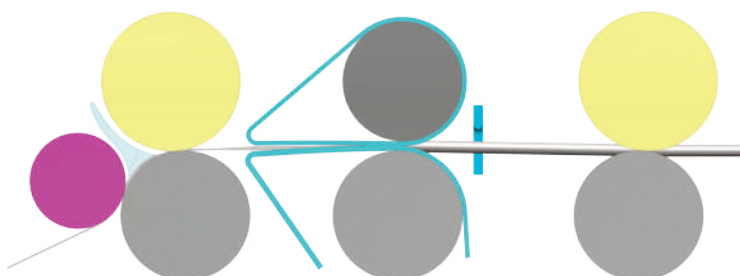
- Easy to install
- No additional energy required
- For any type of ring spinning machine
- Higher yarn quality
- Reducing TPI

- Increases production volume
- Processes all standard materials
- Perfect for man made fibres
- Very fast plug on and plug off

Yarn Characteristics



How does the principle work?



Different Compactor Types

Single channel from Ne 8 to 80
Dual channel Siro Ne 20/2 to 80/2



RECOMPACT® | 2.0

SWISS MADE

PLUS PACKAGE



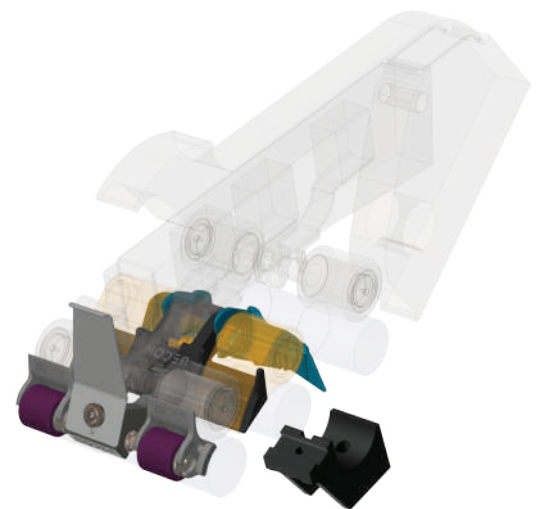
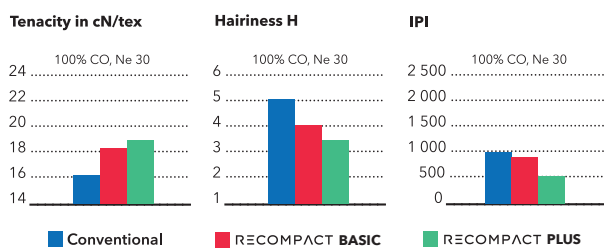
Components

- Compactor
- Top Roller Holder
- Delivery Top Roller
- Roving Guide
- Bearing Slide
- Cradle

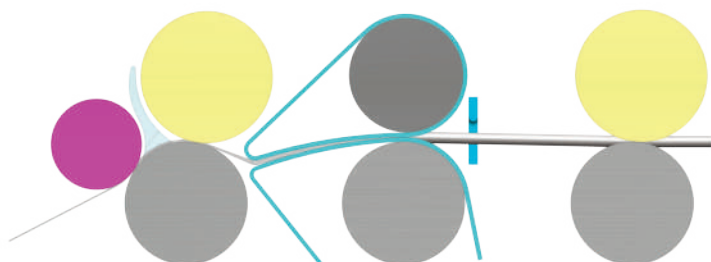
Advantages

- Optimized geometry for mechanical compact
- No additional energy required
- For any type of ring spinning machine
- Best achievable yarn quality
- Reducing TPI by 10%
- Increases production volume
- Processes all standard materials
- No speed limitation

Yarn Characteristics



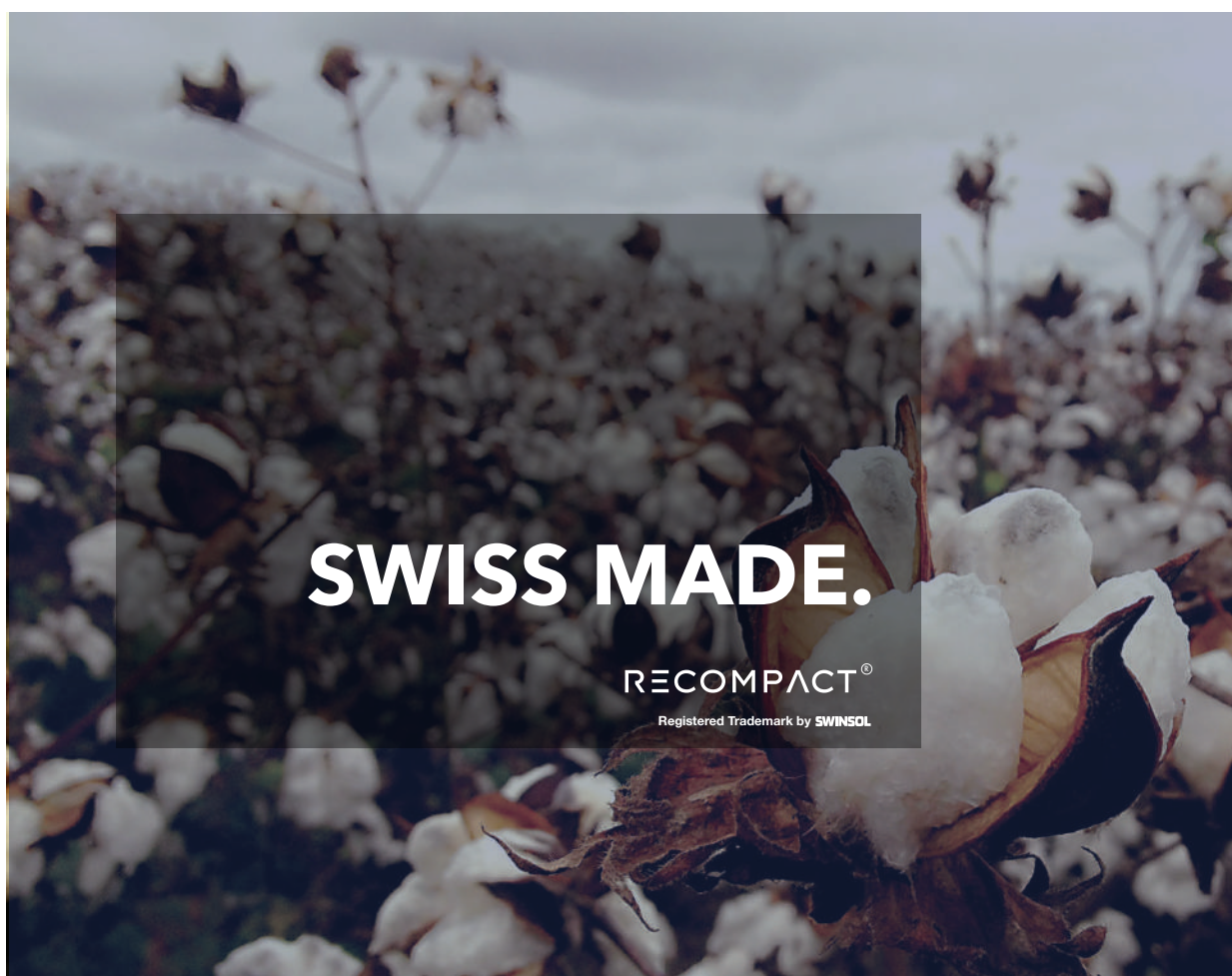
How does the principle work?



Additional setting by Recomcompact 2.0 Plus solution

- Replace the original bearing slide
- Change the top arm settings for negative offset

Recompact 2.0 enables spinners to produce optimum quality yarn aligned with market demands and trends.



Swinsol will not only inspire your organization but will give you concrete and practical guidance needed to build innovation into the fabric of your business.

Swinsol AG
Bahnhofstrasse 6-8
CH-9434 Au
Switzerland

T +41 71 510 92 51
F +41 71 510 92 59
www.swinsol.com
info@swinsol.com