

up to **10%**
increase of
productivity

Cost efficient
High quality yarn
Made in Switzerland

RECOMPACT[®] | 3.0

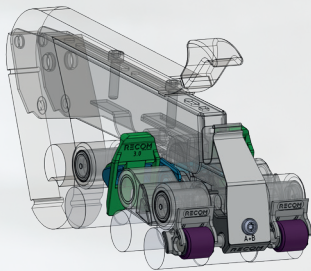
SWISS MADE

Mechanical compacting solution for all types of ring spinning frames

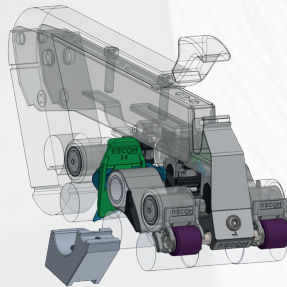


100%
Swiss made.

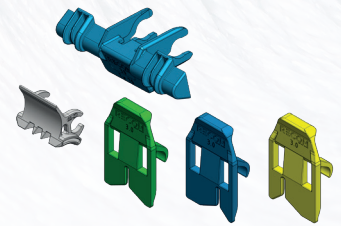
RECOMPACT® 3.0
BASIC



RECOMPACT® 3.0
PLUS



RECOMPACT® 3.0
UPGRADE



SAFE

- safe
- precisely centred from roving
- no setting screws different color-controlled traversing
- user friendly

ECONOMIC

- very fast installing
- no additional cost for vacuum
- low maintenance
- support from Swinsol

- optimized geometry for high speed

- same or better yarn characteristics than BASIC with less yarn breaks

- compatible with other mechanical compact systems

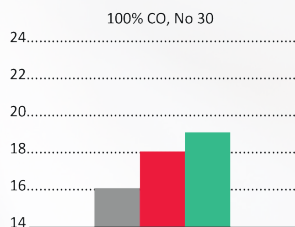
- see above

Impact on the yarn characteristics

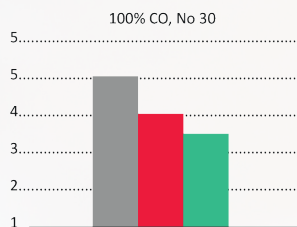
Environmentally friendly

ROI < 12 months

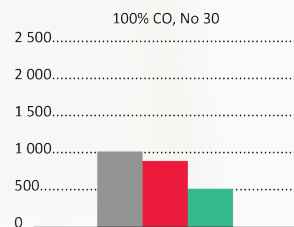
TENACITY IN CN/TEX



HAIRINESS H



IPI



■ Other mech. systems ■ RECOMPACT BASIC ■ RECOMPACT PLUS

Advantages

Your success is our mission.



ECONOMIC

- No additional energy required
- Increases production volume by up to 10%, by reducing TPI
- Higher yarn quality



LOW MAINTENANCE

- No rotation for Rollers and aprons needed
- 50 % higher lifetime of the cots and aprons in comparison with RECOMPACT 2.0 or other mechanical compact systems



APPLICABLE

- For any type of ring spinning machines
- Easy to install
- Processes all standard materials

MORE PERFORMANCE

- Optimized geometry for mechanical compact, less yarn breaks (RECOMPACT 3.0 Plus)
- Precise centering for roving
- Excellent yarn characteristics



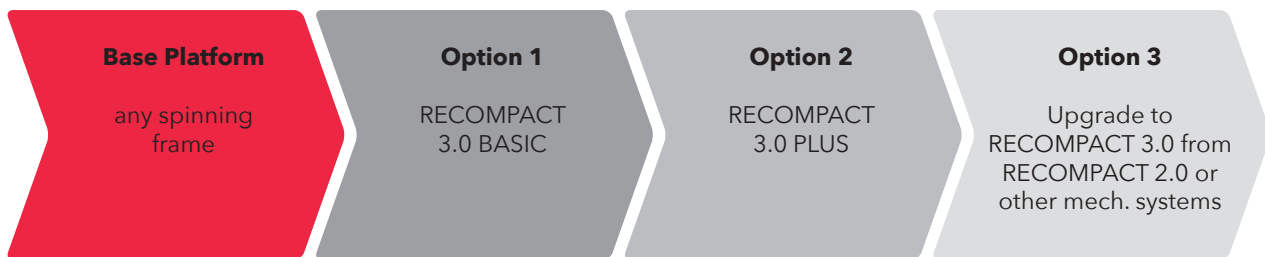
OPERATOR FRIENDLY

- Very fast clip on and clip off (RECOMPACT 3.0 Basic)

Mechanical compacting solution

For ring frames

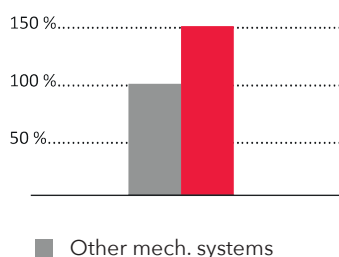
It can be installed on every ringspin frame and is compatible with all types of top arms. Following options are possible:



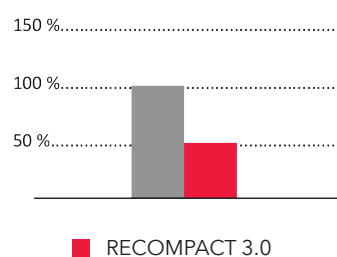
BIG CUSTOMER BENEFITS FROM RECOMPACT 3.0

- **Up to 50% longer lifetime** of the cots and aprons using more than 18 mm from cots and aprons width unique in compact spinning
- Change the roving position without stopping the machine, only change the wings
- No production losses
- No down time
- **Maintenance time reduced by at least 50%** in comparison with other mech. systems, no roller rotating and aprons wearing, longer grinding cycles

COT AND APRONS LIFE TIME



MAINTENANCE TIME

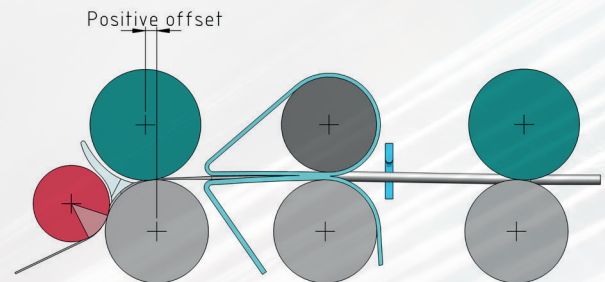


Option 1

RECOMPACT 3.0 BASIC Package

Scope of supply: Multi-channel compactor, Wing support, left Wing, middle Wing, right Wing, Top roller holder, Delivery roller

Settings by Recomact 3.0 Basic
installation of new components

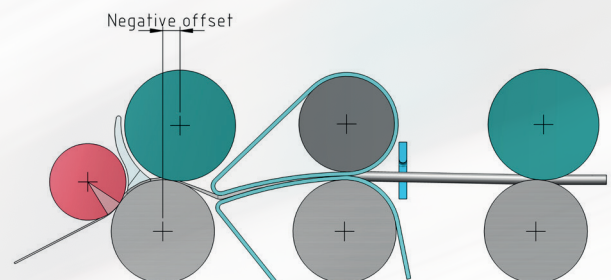


Option 2

RECOMPACT 3.0 PLUS Package

Scope of supply: Multi-channel compactor, Wing support, left Wing, middle Wing, right Wing, Top roller holder, Delivery roller, Bearing slide, Cradle

Settings by Recomact 3.0 PLUS
Replace the original bearing slide to optimize geometry for mechanical compact and change the top arm settings for negative offset

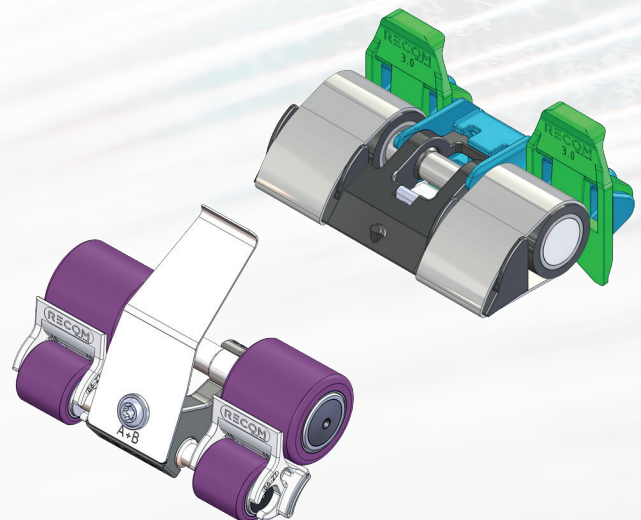


Option 3

UPGRADE to RECOMPACT 3.0 from RECOMPACT 2.0 or other mechanical compact systems

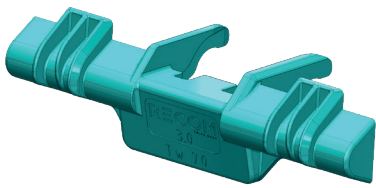
Scope of supply: Multi-channel compactor, Wing support, left Wing, middle Wing, right Wing

Replace the old compactor and roving guide with new components.

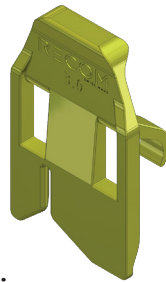


Components of controlled traversing unit

Roving guide with changeable wings
(set of 3 parts), 1 pc for each spindle



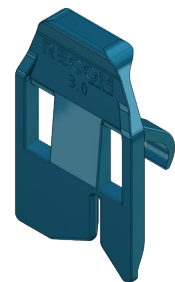
Wing support
1 pc per 2 spindles



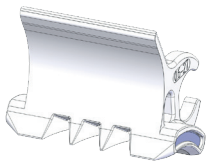
Left wing



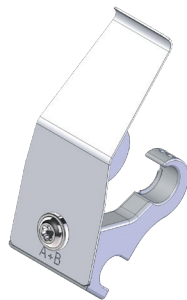
Middle wing



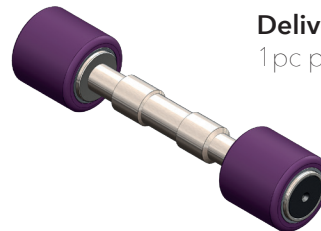
Right wing



Multi-channel compactor
1 pc per spindle



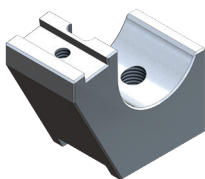
Top roller holder
1 pc per 2 spindles



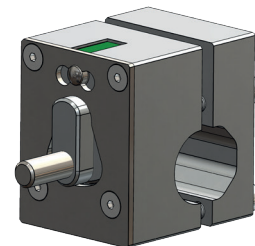
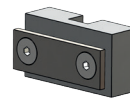
Delivery roller
1 pc per 2 spindles



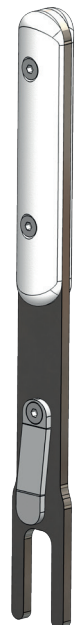
Cradle
1 pc per 2 spindles



Bearing slide
1 pc per 2 spindles



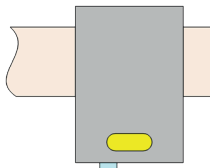
Traversing settings box
two units per ringframe



How does the principle of controlled traversing work?

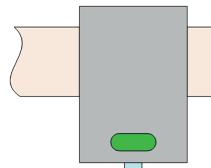
TRAVERSING POSITION NO. 1

1
Start with yellow wing



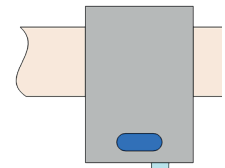
TRAVERSING POSITION NO. 2

2
Change to green wing



TRAVERSING POSITION NO. 3

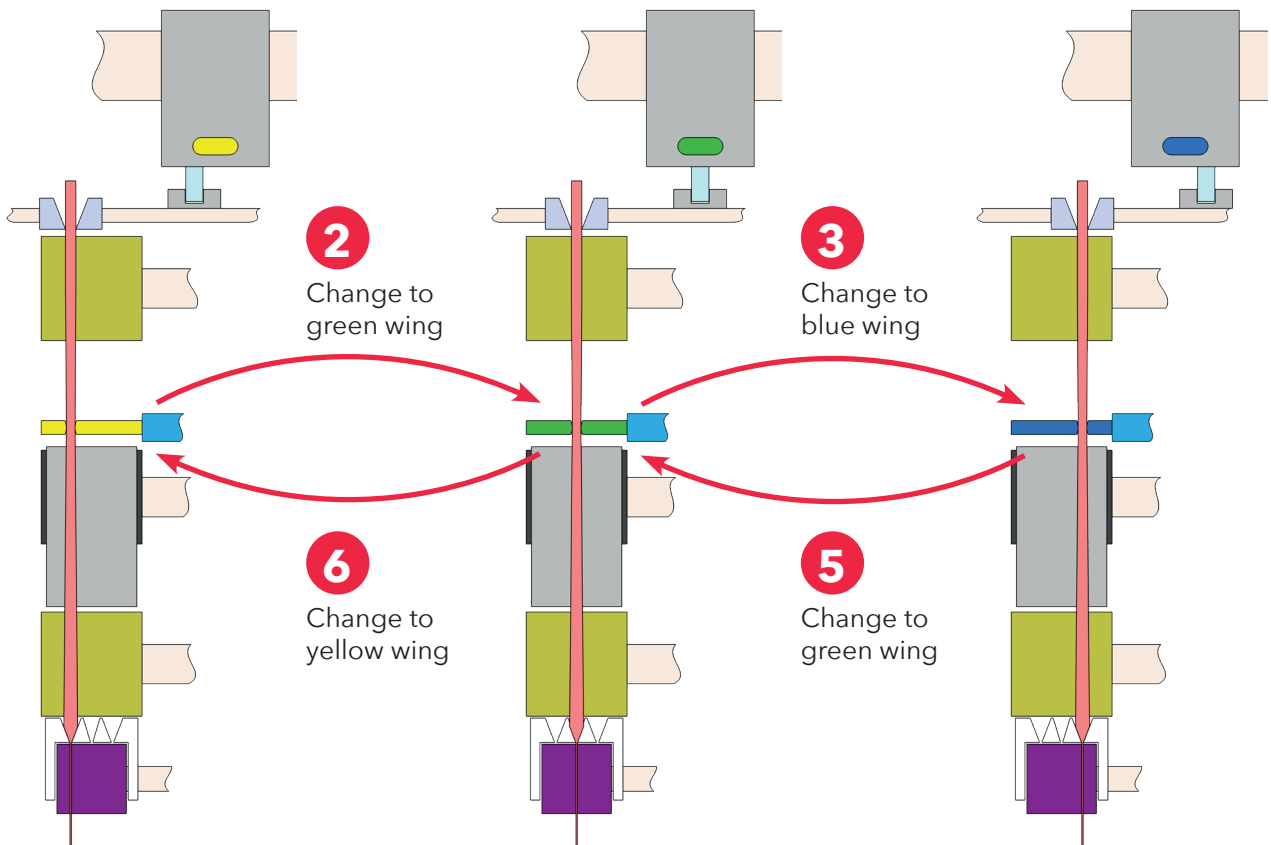
4
Grinding the front top roller, start with blue wing



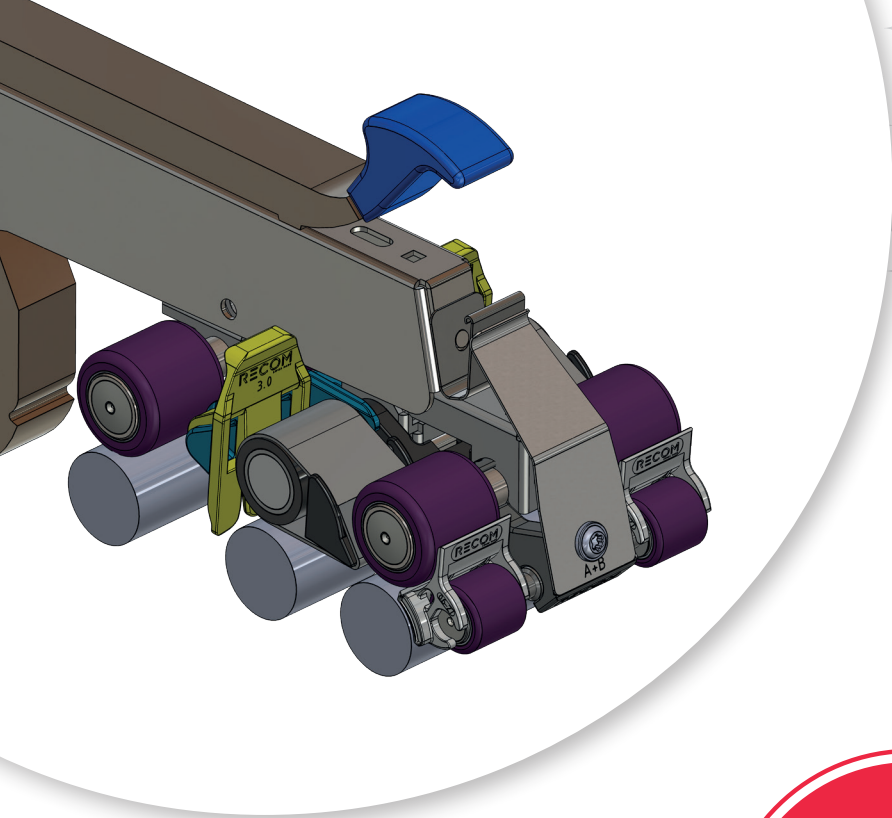
3
Change to blue wing

6
Change to yellow wing

5
Change to green wing



Repeat the steps from 1 to 6 according to your quality and performance control.



For free trials &
more information,
please contact us!



Swinsol AG
Bahnhofstrasse 6-8
CH-9434 Au
Switzerland

T +41 71 510 92 51
F +41 71 510 92 59
www.swinsol.com
info@swinsol.com

Download
Brochure PDF

