

up to **10%**
increase of
productivity

18mm
automatic &
controlled
traversing

Cost efficient
High quality yarn
Made in Switzerland

RECOMPACT[®] | 3.T

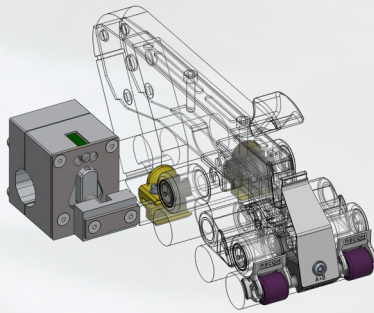
SWISS MADE

Mechanical compacting solution for all types of ring spinning frames

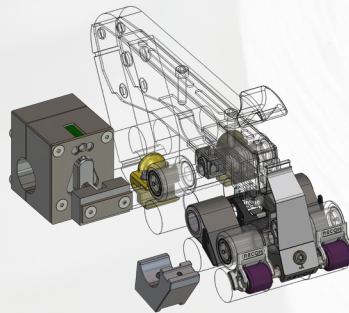


100%
Swiss made.

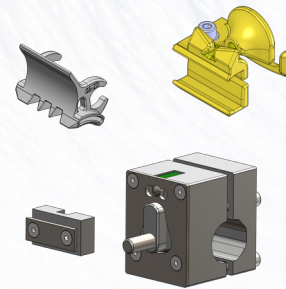
RECOMPACT[®]3.T
BASIC



RECOMPACT[®]3.T
PLUS



RECOMPACT[®]3.T
UPGRADE



SAFE

- safe
- precisely centred from roving
- one-time set & forget
- user friendly

- optimized geometry for high speed

- compatible with other mechanical compact systems

ECONOMIC

- very fast installing
- no additional cost for vacuum
- maintenance as conventional spinning
- automatic controlled traversing

- same or better yarn characteristics than BASIC with less yarn breaks

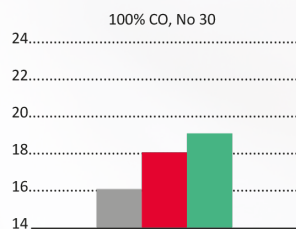
- see above

Impact on the yarn characteristics

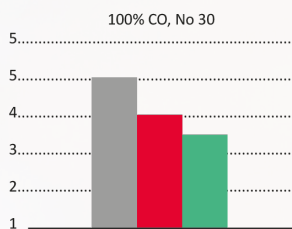
Environmentally friendly

ROI < 12 months

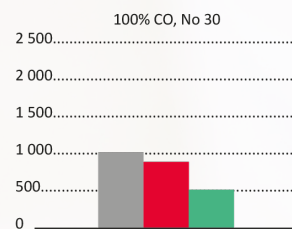
TENACITY IN CN/TEX



HAIRINESS H



IPI



■ Other mech. systems ■ RECOMPACT BASIC ■ RECOMPACT PLUS

Advantages

Your success is our mission.



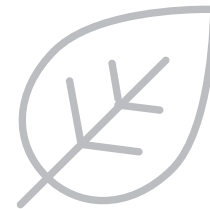
ECONOMIC

- No additional energy required
- Increases production volume by up to 10%, by reducing TPI
- Higher yarn quality



LOW MAINTENANCE

- Same as conventional spinning
- No rotation for rollers and aprons needed
- 50 % higher lifetime of the cots and aprons in comparison with RECOMPACT 2.0 or other mechanical compact systems



APPLICABLE

- For any type of ring spinning machines
- Easy to install
- Processes all standard materials

MORE PERFORMANCE

- Optimized geometry for mechanical compact, less yarn breaks (RECOMPACT 3.T Plus)
- Precise centering for roving
- Excellent yarn characteristics



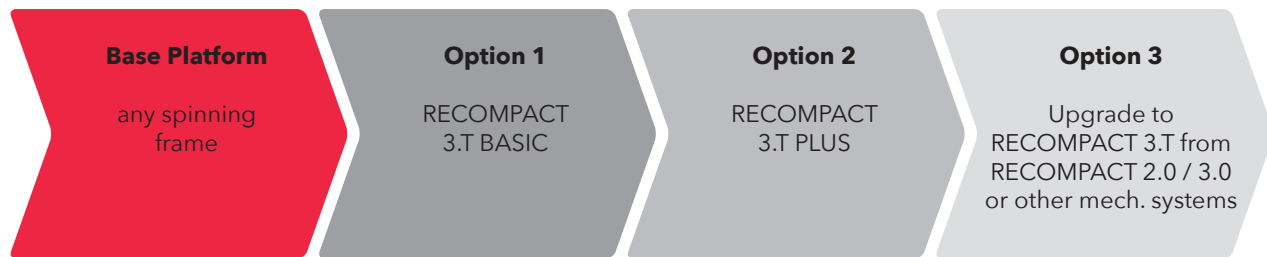
OPERATOR FRIENDLY

- Automatic 18 mm controlled traversing
- Reduction of manpower / no manual operations

Mechanical compacting solution

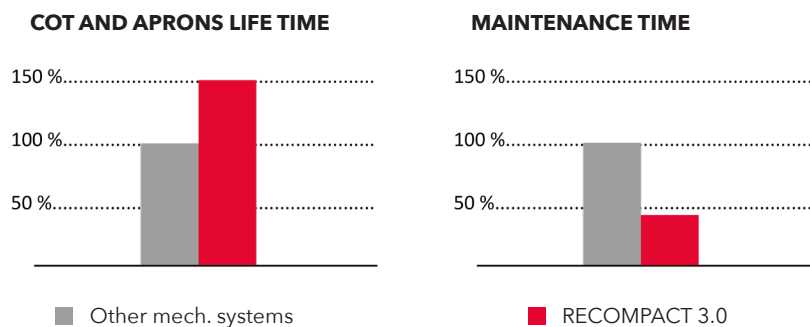
For ring frames

It can be installed on every ringspin frame and is compatible with all types of top arms. Following options are possible:



BIG CUSTOMER BENEFITS FROM RECOMPACT 3.0

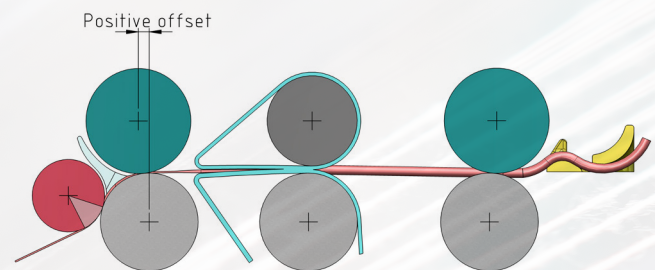
- **Up to 50% longer lifetime** of the cots and aprons using more than 18 mm from cots and aprons width unique in compact spinning
- Change the roving position without stopping the machine, automatic change by gearbox
- No production losses
- Downtime similar to conventional spinning
- **Maintenance time reduced by at least 50%** in comparison with other mech. systems, no roller rotating and aprons wearing, longer grinding cycles



Option 1
RECOMPACT 3.T BASIC Package

Scope of supply: Multi-channel compactor, Double condenser, Top roller holder, Delivery roller, Gearbox (1 pc per machine)

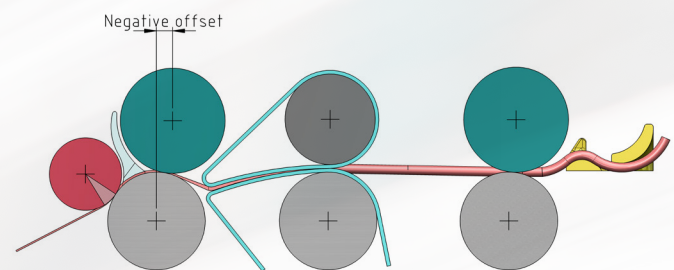
Settings by Recomact 3.T Basic
 installation of new components



Option 2
RECOMPACT 3.T PLUS Package

Scope of supply: Multi-channel compactor, Double condenser, Top roller holder, Delivery roller, Bearing slide, Cradle, Gearbox (1 pc per machine)

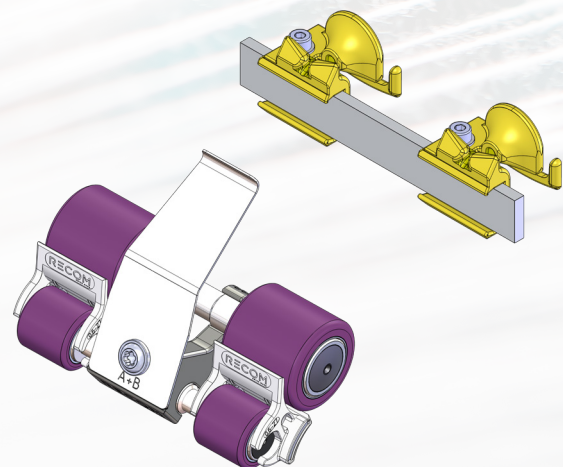
Settings by Recomact 3.T Plus
 Replace the original bearing slide to optimize geometry for mechanical compact and change the top arm settings for negative offset



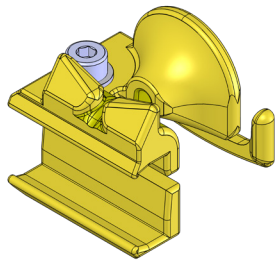
Option 3
UPGRADE to RECOMPACT 3.T from RECOMPACT 2.0 / 3.0 or other mechanical compact systems

Scope of supply: Multi-channel compactor, Double condenser, Gearbox (1 pc per machine)

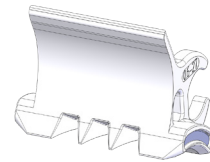
Replace the old compactor and roving guide with new components.



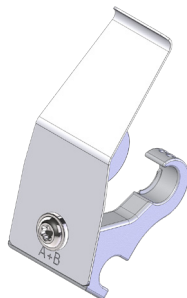
Components of controlled traversing unit



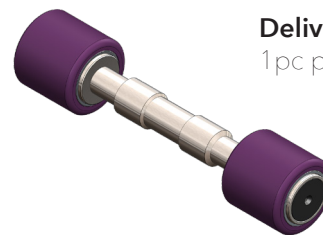
Double condenser
1 pc for each spindle



Multi-channel compactor
1 pc per spindle



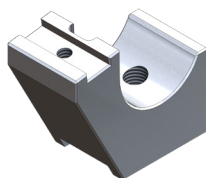
Top roller holder
1 pc per 2 spindles



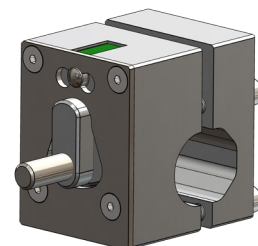
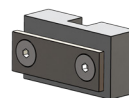
Delivery roller
1 pc per 2 spindles



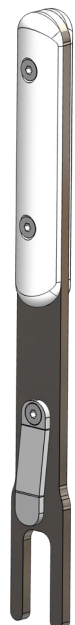
Cradle
1 pc per 2 spindles



Bearing slide
1 pc per staff



Gearbox
two units per ringframe

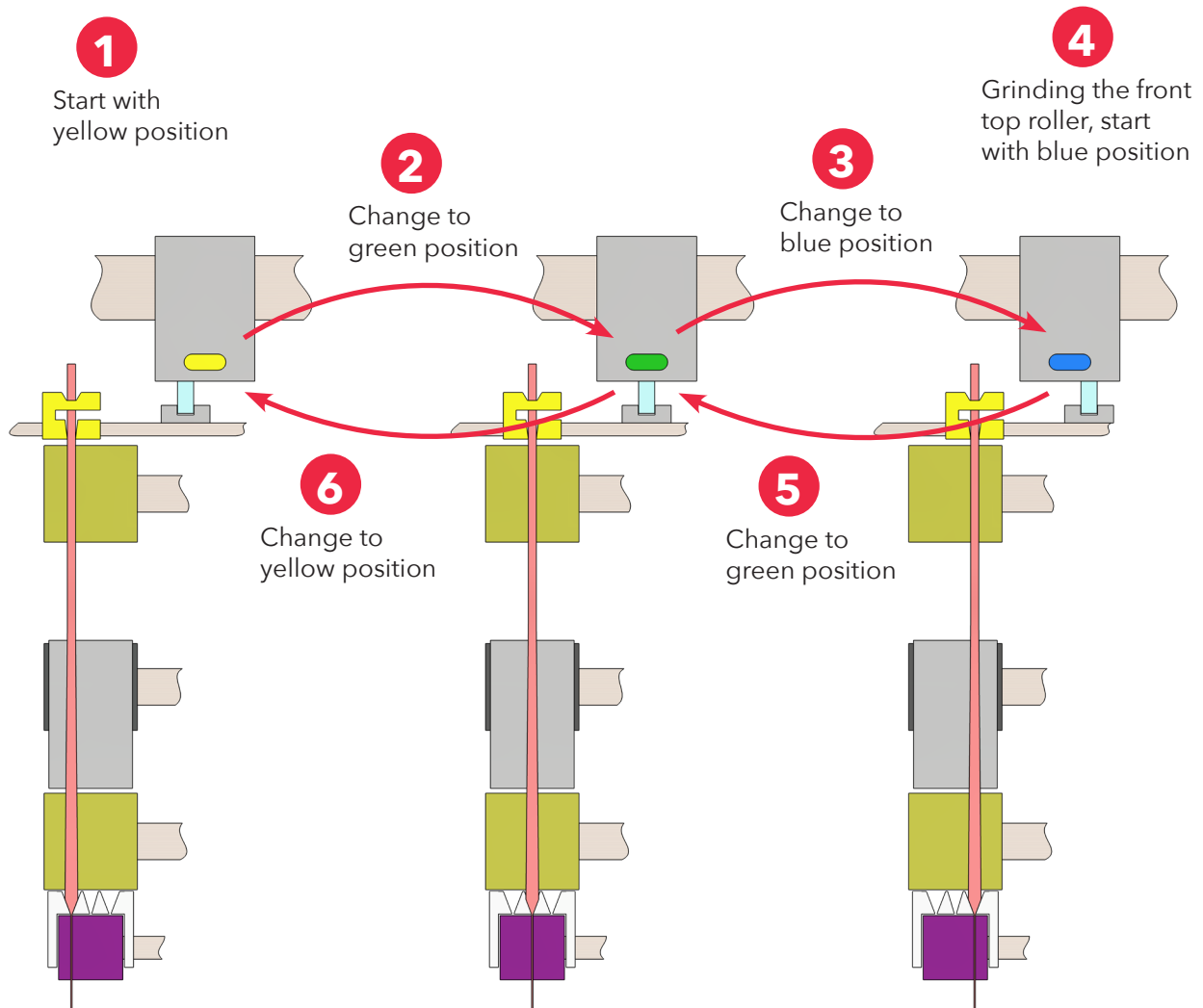


How does the principle of controlled traversing work?

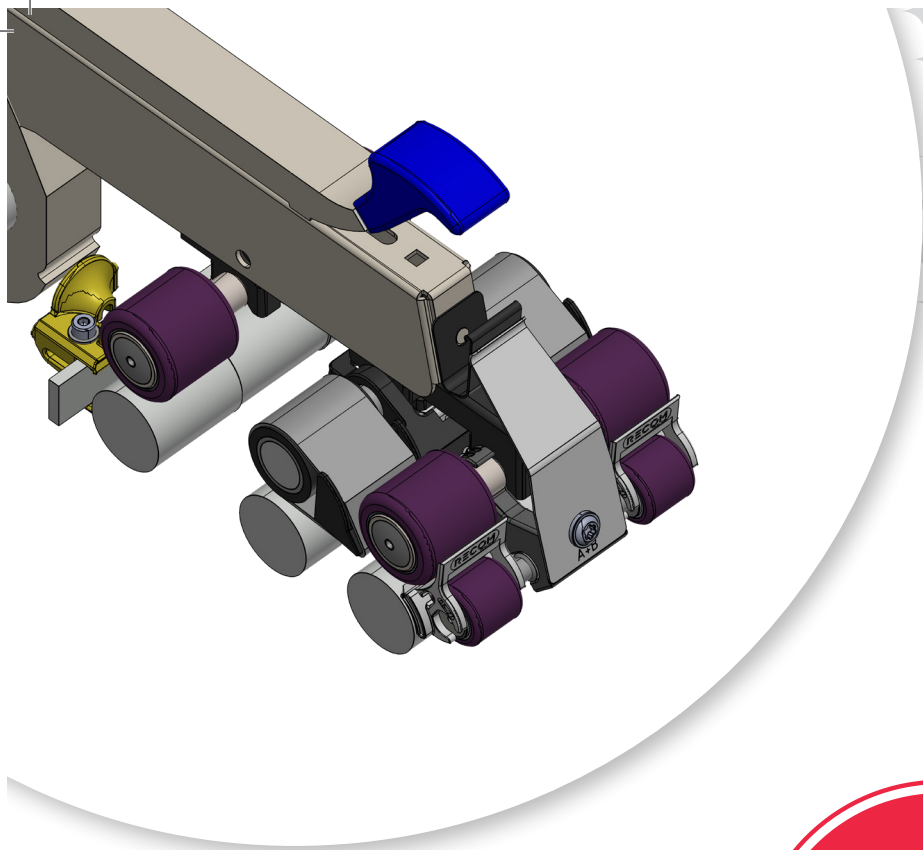
TRAVERSING POSITION NO. 1

TRAVERSING POSITION NO. 2

TRAVERSING POSITION NO. 3



Repeat the steps from 1 to 6 according to your quality and performance control.



For free trials &
more information,
please contact us!



Swinsol AG
Bahnhofstrasse 6-8
CH-9434 Au
Switzerland

T +41 71 510 92 51
F +41 71 510 92 59
www.swinsol.com
info@swinsol.com

Download
Brochure PDF

